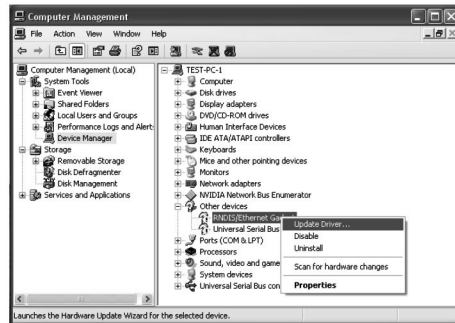


Configuration Mode USB Driver Install Guide

1、Install Win XP Ethernet Driver

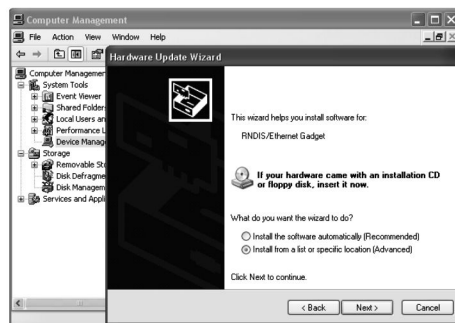
- Right click My Computer, choose Manage.
- Choose Device Manager on the navigator tab on the left, right click “RNDIS/Ethernet Gadget” on the right. Click Update Driver.



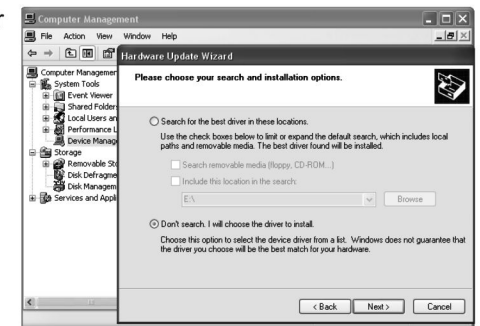
- Select “No, not this time”. Then click Next.



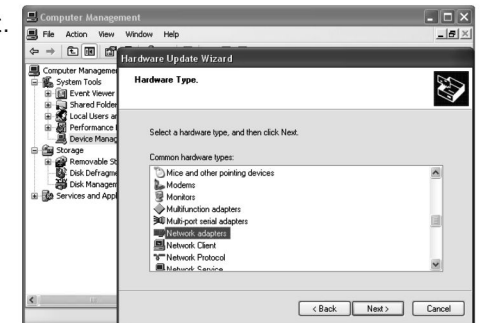
- Select “Install from a list or specific location (Advanced)”. Then click Next.



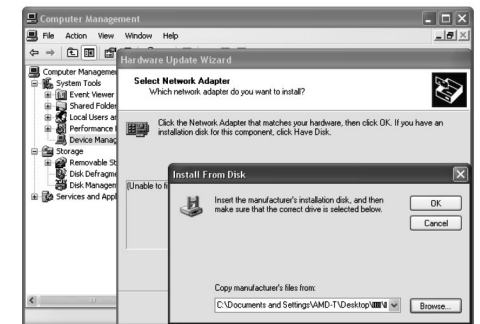
- Select “Don't search. I will choose the driver to install.” Then click Next.



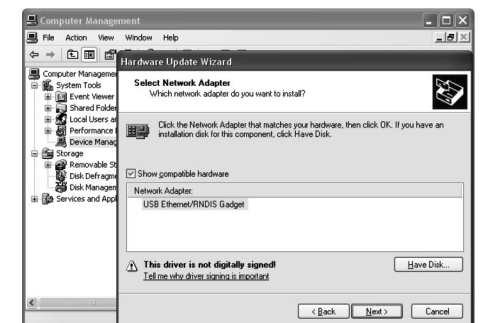
- Select “Network adapters”. Then click Next.



- Select “Install From Disk”, and select “Browse...” Choose RNDIS / Ethernet Gadget driver and click OK.

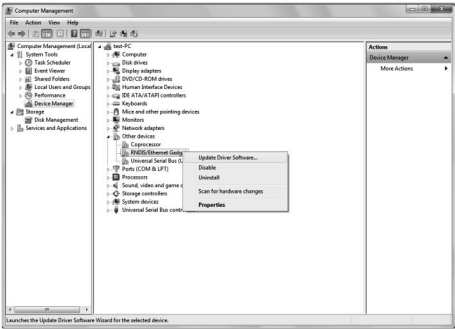


- Select “Acme USB Remote NDIS Network Device”, and click Next.
- Select “Continue Anyway” to proceed.
- Installation complete.

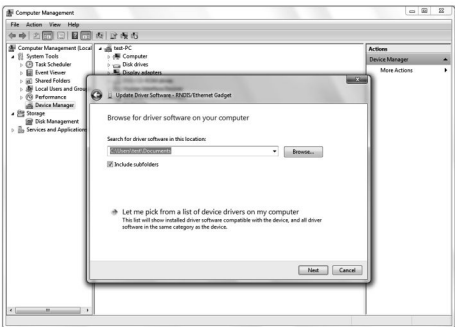


2、Manually install Win 7/8 Ethernet Driver

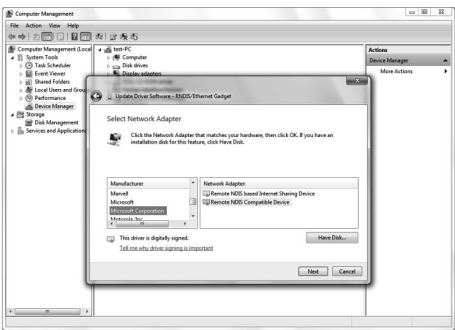
- a) Choose Device Manager on the navigator tab on the left, right click “RNDIS / Ethernet Gadget” on the right. Click Update Driver Software...
- b) Select “Browse my computer for driver software”.



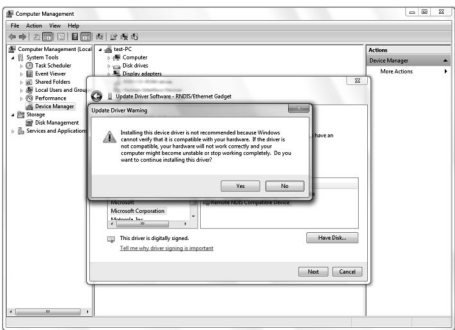
- c) Select “Let me pick from a list of device drivers on my computer”.
- d) Select “Network adapters”, and click Next.



- e) Select “Microsoft Corporation” on the left, for Win 7 select “Remote NDIS Compatible Device”, for Win 8 select “Remote NDIS based Internet Sharing Device”, and click Next.

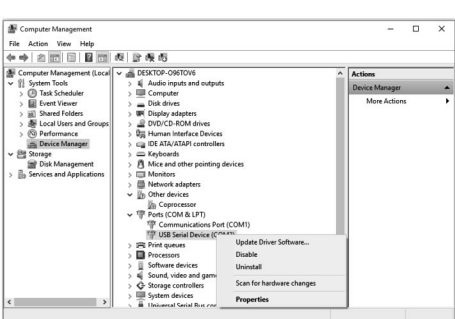


- f) Select “Yes” to proceed.
- g) Installation complete.
- h) Select Network Location based on your actual needs.

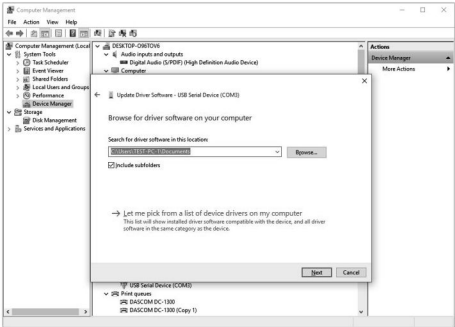


3、Install Win 10 Ethernet Driver

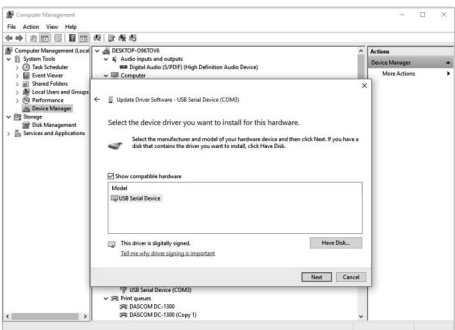
- a) Choose Device Manager on the navigator tab on the left, right click “USB Serial Device” on the right. Click Update Driver Software...
- b) Select “Browse my computer for driver software”.



- c) Select “Let me pick from a list of device drivers on my computer(L)”, and click Next.



- d) Select “Install From Disk”, and select “Browse...” Choose RNDIS / Ethernet Gadget driver and click OK.



- e) Select “Acme USB Remote NDIS Network Device”, and click Next.
- f) Installation complete.

